

Mary Lin Elementary School

PRINCIPAL'S COFFEE

NWEA MAP ASSESSMENTS



MAP Growth English Language Arts

MAP Growth Mathematics

MAP Growth Science (5th only)

MAP Reading Fluency (KK-3rd only)

Fall, Winter and Spring

TODAY'S AGENDA

- Overview of Assessments
- What is MAP Growth? video from NWEA
- The Student Perspective: Michael & Lyla's Stories
- How to read the MAP Family Report
- How do teachers use MAP Data?
- MAP Goal Setting
- Questions?
- Closing

Overview of Assessments

MAP GROWTH

An assessment that dynamically measures what students know, shows how they've grown, helps educators inform their decisions about classroom instruction, and predicts achievement on GMAS.

MAP READING FLUENCY

A screener that measures phonological awareness, phonics, word recognition, and language comprehension, including Rapid Automatized Naming (RAN).

What is MAP Growth?

What is...

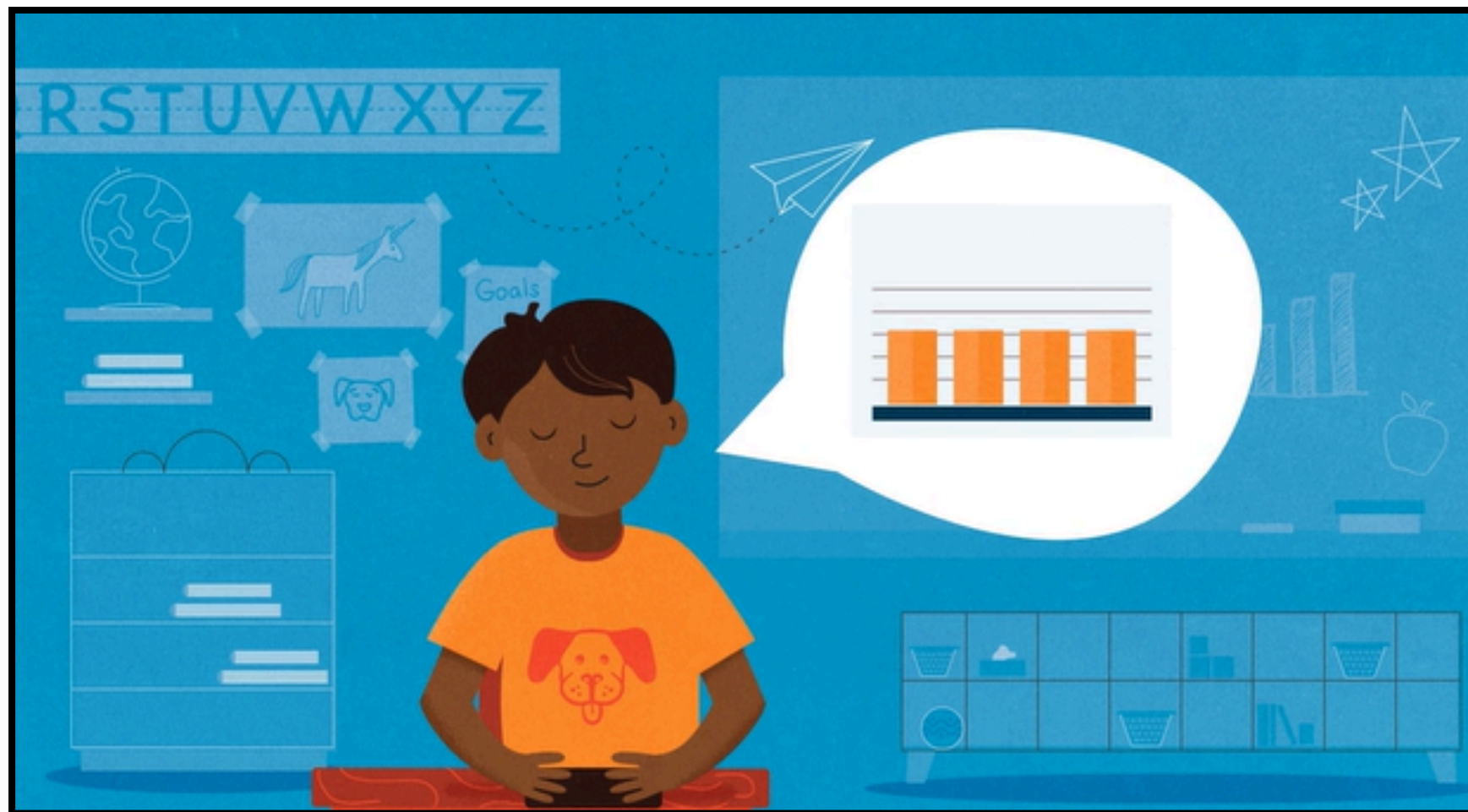


map GROWTH

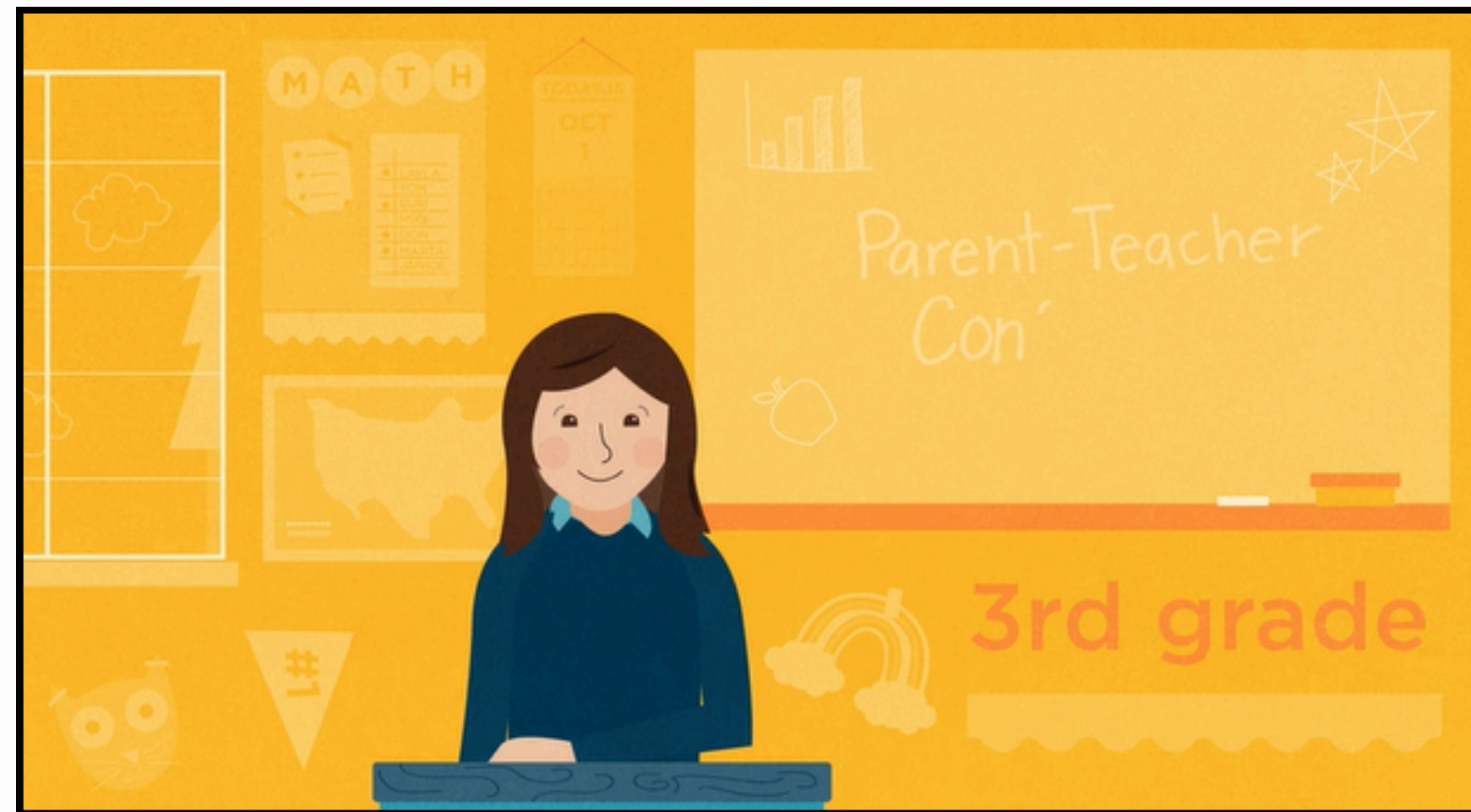
nwea



Michael & Lyla's Stories



MICHAEL SHARES WHAT IT'S LIKE TO TAKE A MAP GROWTH TEST.



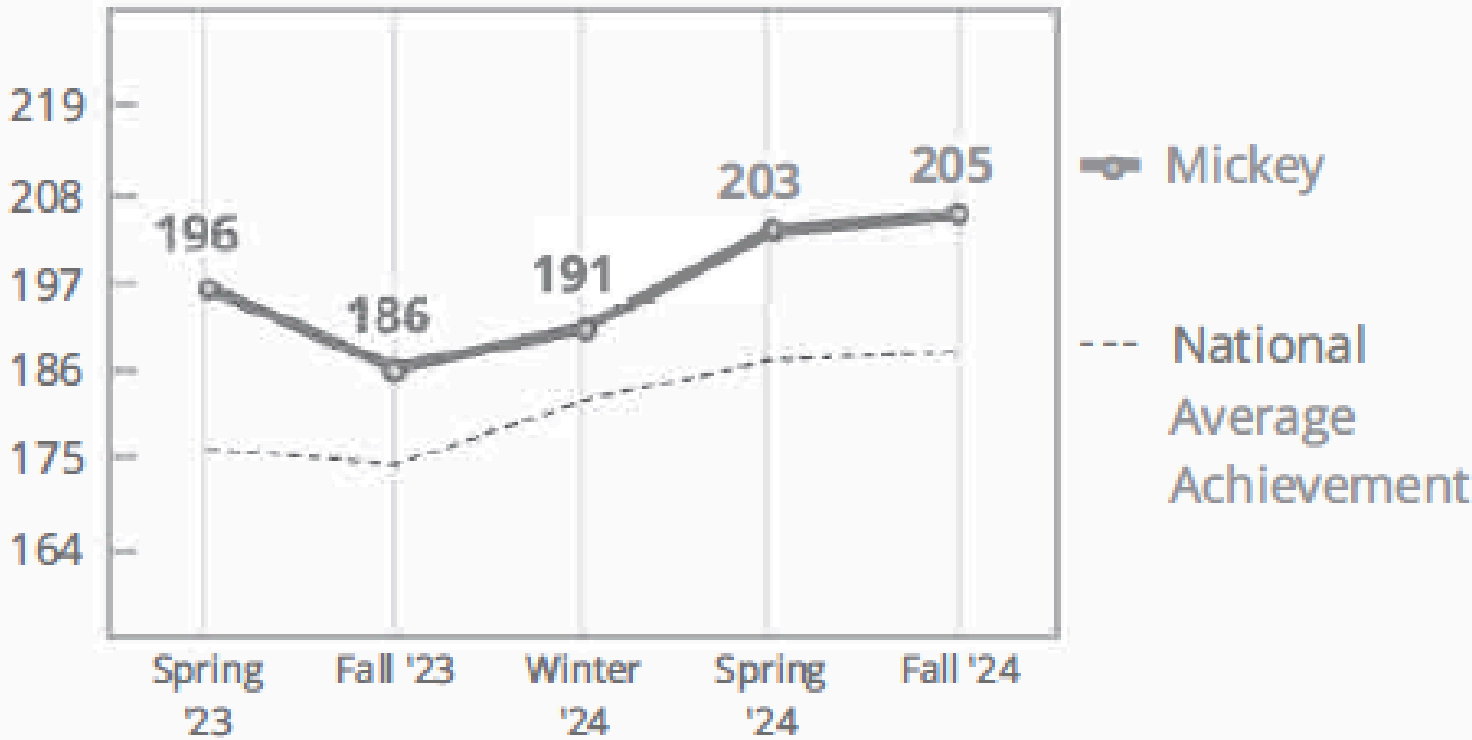
**SEE MAP GROWTH DATA FROM A STUDENT'S POINT OF VIEW.
REFLECTIONS FROM REAL STUDENTS USING MAP.**

MAP Family Report



Mathematics

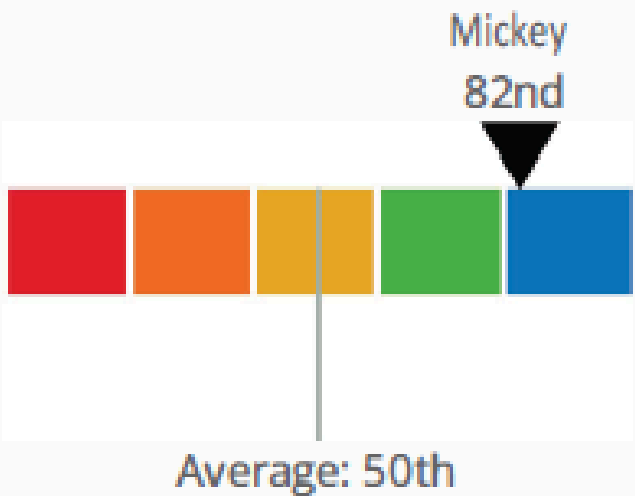
High Achievement 90th Percentile



Mickey's overall score (RIT score) was a 205 on a range of 100-350. Your child is in the 90th percentile, which means they scored better than 90% of their peers.

High Growth 82nd Percentile

Your child's growth from Fall 2023 to Fall 2024 is in the 82nd percentile, which means they made more progress than 82% of their peers.



Mickey is likely to be:

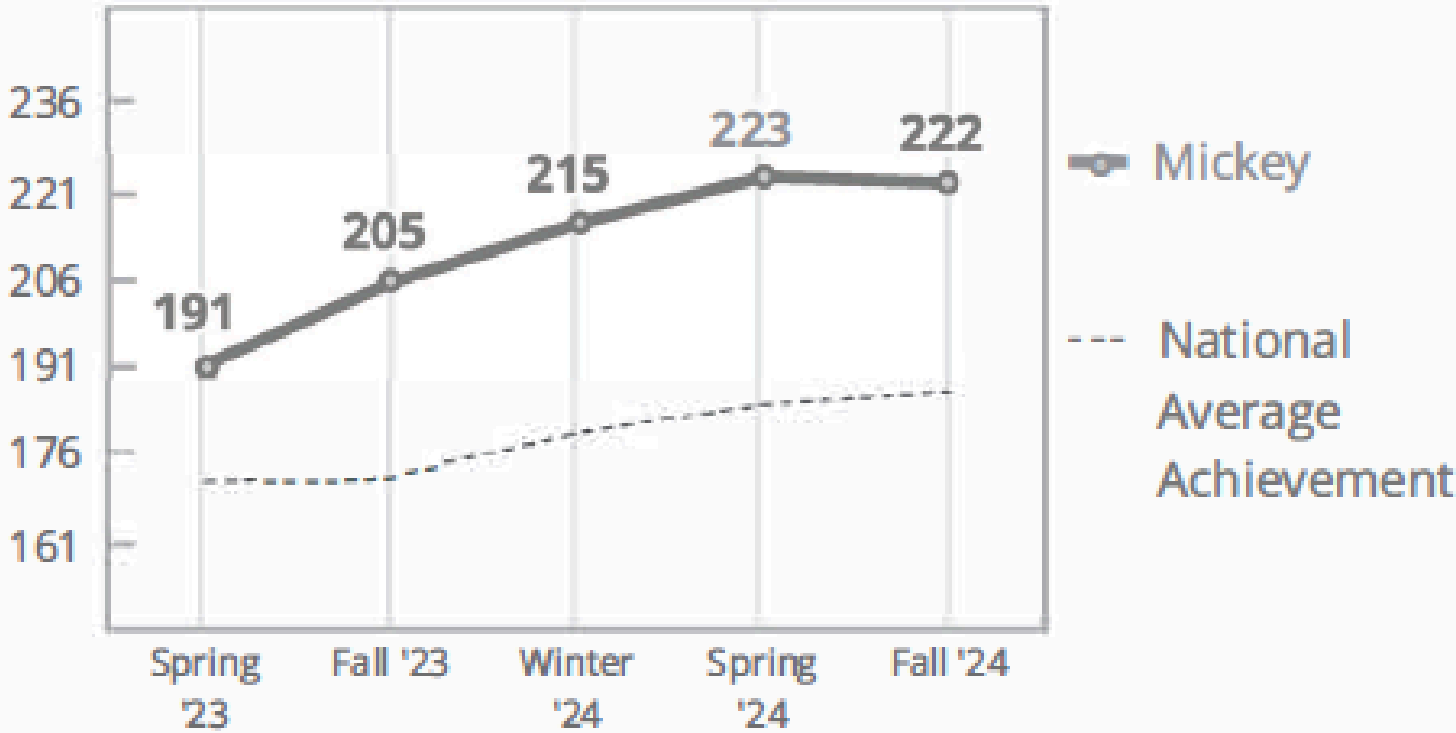
- *Distinguished* on the Georgia Milestones (if taken in Spring 2025)

MAP Family Report



Reading

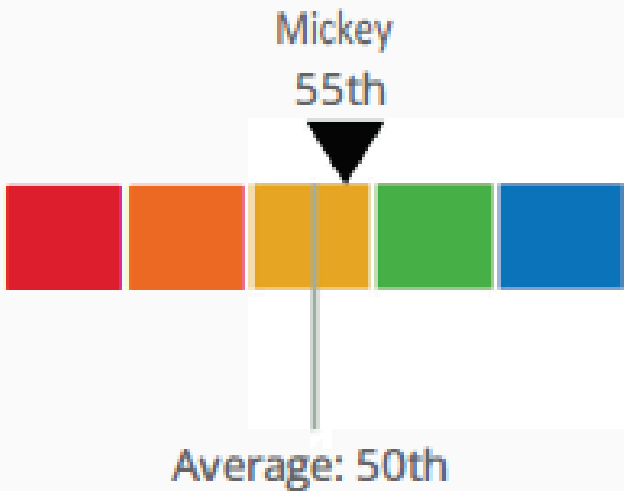
High Achievement 98th Percentile



Mickey's overall score (RIT score) was a 222 on a range of 100-320. Your child is in the 98th percentile, which means they scored better than 98% of their peers.

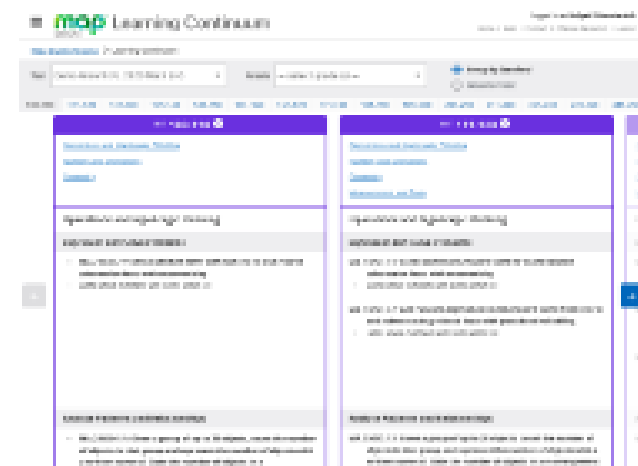
Average Growth 55th Percentile

Your child's growth from Fall 2023 to Fall 2024 is in the 55th percentile, which means they made more progress than 55% of their peers.



- Mickey is likely to be:
- *Distinguished* on the Georgia Milestones (if taken in Spring 2025)

HOW DO TEACHERS USE MAP DATA?



Learning Continuum

- View the skills and concepts assessed by MAP Growth
- Understand the relative difficulty level of test content
- Gather context for how a student's RIT score aligns to the difficulty level of test content

<https://reports.mapnwea.org/learning-continuum>

MAP Growth Domains - Planning



Grade Level Domain Breakdown K-2 Teacher View

	Lo %ile < 21		LoAvg %ile 21-40		Avg %ile 41-60		HiAvg %ile 61-80		Hi %ile > 80		Mean RIT Score (+/- Smp Err)	Std Dev
	count	%	count	%	count	%	count	%	count	%		
Overall Performance												
Growth: Reading K-2 GA 2015 / GA Standards of Excellence English Language Arts: 2015	0	0%	2	3%	4	6%	11	16%	52	75%	172-173-175	11.6
Instructional Area RIT Range												
Language and Writing	1	1%	1	1%	7	10%	21	30%	39	57%	169-171-172	11.8
Vocabulary Acquisition and Use	1	1%	1	1%	7	10%	13	19%	47	68%	174-176-177	14.4
Foundational Skills	1	1%	0	0%	11	16%	14	20%	43	62%	173-175-177	16.9
Reading Literary and Informational	1	1%	4	6%	9	13%	10	14%	45	65%	171-172-174	13.5



	Lo %ile < 21		LoAvg %ile 21-40		Avg %ile 41-60		HiAvg %ile 61-80		Hi %ile > 80		Mean RIT Score (+/- Smp Err)	Std Dev
	count	%	count	%	count	%	count	%	count	%		
Overall Performance												
Growth: Math 2-5 GA 2021 / GA Standards of Excellence Mathematics: 2021	2	2%	6	7%	14	16%	23	26%	42	48%	198-199-200	11
Instructional Area RIT Range												
Measurement & Data Reasoning	3	3%	5	6%	8	9%	16	18%	55	63%	201-203-204	13.4
Geometric & Spatial Reasoning	2	2%	14	16%	8	9%	19	22%	44	51%	199-200-202	13.4
Numerical Reasoning	2	2%	5	6%	20	23%	27	31%	33	38%	197-198-199	11.6
Patterning & Algebraic Reasoning	4	5%	16	18%	18	21%	22	25%	27	31%	193-194-196	12.9

Grade Level Domain Breakdown 3-5 Teacher View

MAP Goal Setting

All teachers, second through fifth grade, sit down with students for a one-on-one conference to discuss academic goals and set personal MAP Growth goals. These goals are based on their areas and strength and focus from MAP data.

NAME _____ TEACHER _____

 **MAP Goal Setting** 

FALL SCORE ___ ☐ MATH ☐ READING ☐ SCIENCE

140 150 160 170 180 190 200 210 220 230 240 250 260 270

WINTER GOAL ___

140 150 160 170 180 190 200 210 220 230 240 250 260 270

WINTER SCORE ___

140 150 160 170 180 190 200 210 220 230 240 250 260 270

SPRING GOAL ___

140 150 160 170 180 190 200 210 220 230 240 250 260 270

SPRING SCORE ___

140 150 160 170 180 190 200 210 220 230 240 250 260 270

I want to get better at...

I will do this by...

My teacher can help me by...

Mary Lin Elementary School

PRINCIPAL'S COFFEE

NWEA MAP ASSESSMENTS

Denise Bringslid

Principal

dmbbringslid@apsk12.org

(404) 802-8850



Emily Fuller

Instructional Coach

egfuller@apsk12.org

(404) 802-8869

